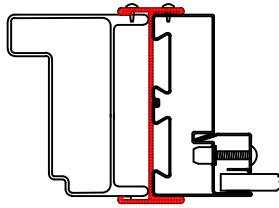
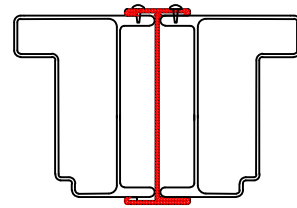


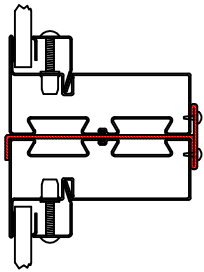
Fixed Window Over Casement/Awning Horizontal Zero Mullion



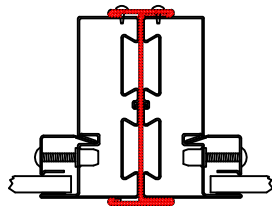
Fixed With Casement/Awning Vertical Zero Mullion



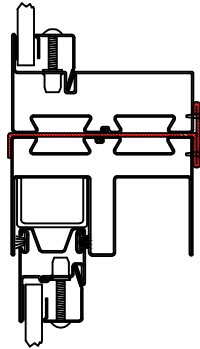
Casement/Awning Window Vertical Zero Mullion



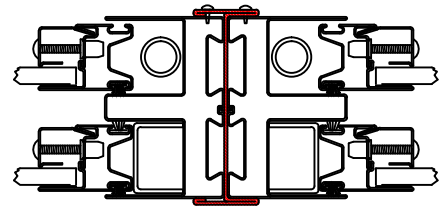
Fixed Window Horizontal Zero Mullion



Fixed Window Vertical Zero Mullion



Fixed Over Operable Window Zero Horizontal Mullion



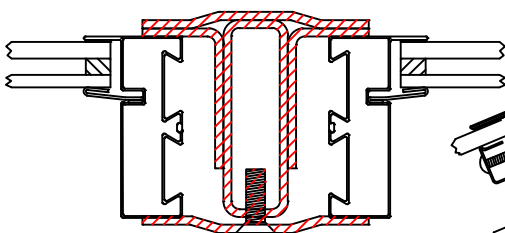
Operable Window Vertical Zero Mullion

MULLIONS

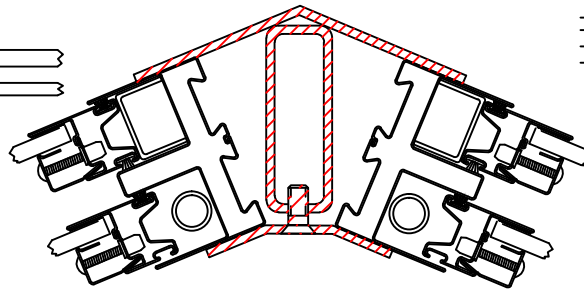
Fyre-Tec offers several mullion styles that allow interconnection of the framing systems permitting the openings to exceed the size of the largest individual window. Two or more windows may be “mulled” to fill the opening or create the “look” desired while maintaining the protective integrity.

NFPA 80 restricts mulled opening to 84 square feet maximum, with neither height nor width dimension to exceed 12 feet.

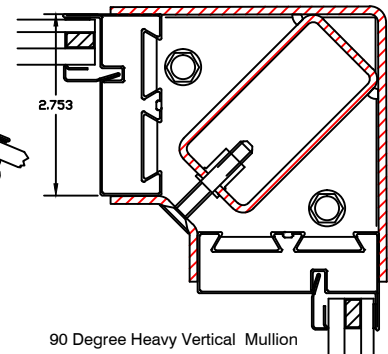
Mullions are to be screwed 3” from ends and 16” to 24” evenly spaced on the interior of the opening. Caulking should be applied at all exterior seams to ensure proper water protection on exterior applications. If window contains weeps avoid caulking them shut.



Heavy Vertical Mullion



45 Degree Heavy Vertical Mullion



90 Degree Heavy Vertical Mullion